



AUCTION

LEADING THE INDUSTRY SINCE 1945

Realtors • Auctioneers • Advisors

TUESDAY – AUGUST 4, 2020 – 5:00 PM
REAL ESTATE SELLS AT 5:30 PM

Cynthia Fullerton Estate

**1400+ SQ. FT. BRICK RANCH HOME – THREE BEDROOMS –
TWO-CAR ATTACHED GARAGE – BLACKTOP DRIVE – 24 X
32 POLE BUILDING – ALL ON 17 ACRES – BRISTOL TWP. &
SCHOOLS – TRUMBULL CO.**

**REAL ESTATE SOLD LIVE ONSITE WITH ONLINE
BIDDING AVAILABLE**

Also Selling: Household – Furniture – Loads Of Sewing Material/Yarn – Etc.

To settle the estate, all sells on location:

839 HOUSEL CRAFT RD., BRISTOLVILLE, OH 44402

Directions: Take St. Rt. 45 north of Champion or south of Bristol to Houzel Craft Rd. and east approx. 2 miles to auction.

Watch for KIKO signs.



Real Estate: 1,447 sq. ft. brick ranch home, built in 1974 with kitchen, formal dining room, living room with WB fireplace, master bedroom w/ full bath, two more bedrooms and second full bath, two-car attached garage, enclosed breezeway between house and garage, unfinished basement with laundry, glass-block windows, electric heat, WB fireplace in basement, shingle roof 4 years ago, modern home but needs some TLC. 24X32 pole building with concrete floor. 17 acres open in front with shade trees, fenced in area, wooded in back. Nice setting. Quiet area.



Information is believed to be accurate but not guaranteed. KIKO Auctioneers

800-533-5456 | kikoauctions.com



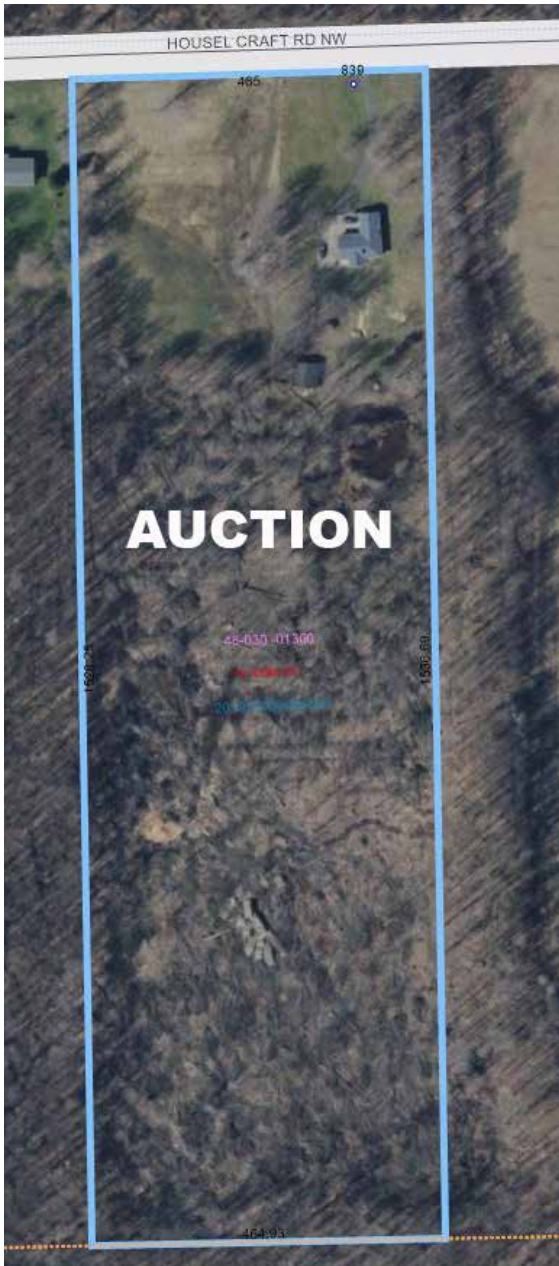


2722 Fulton Dr. NW, Canton, OH 44718
kikoauctions.com

Tuesday – August 4, 2020 – 5:00 PM

BRICK RANCH HOME - 24 X 32 POLE BUILDING ON 17 ACRES

Bristol Twp. & Schools – Trumbull Co.
Real Estate Sold Live Onsite with Online Bidding
Available
Also Selling: Household – Furniture – Loads Of
Sewing Material/Yarn



TERMS ON REAL ESTATE: 10% down auction day, balance due at closing. A 10% buyer's premium will be added to the highest bid to establish the purchase price. Any desired inspections must be made prior to bidding. All information contained herein was derived from sources believed to be correct. Information is believed to be accurate but not guaranteed.

Furniture – Misc.: Jacobean style hutch and server – drop-front secretary – Heyser player piano – 3 pc. mat. dressers – misc. costume jewelry – jewelry cabinet – misc. Kitchenware – entertainment cabinet – loads of sewing material and yarn – sewing items – footlocker – many items packed away.

TERMS ON CHATTELS: Driver's license or State ID required to register for bidder number. Cash, Check, Debit Card, Visa, or Master Card accepted. 4% buyer's premium on all sales; 4% waived for cash or check. Information is believed to be accurate but not guaranteed. Multi Par auction process may be used.

Auction By Order Of: Robert T. Wolverton executor of the Cynthia F. Fullerton Estate. Trumbull Co. Case #2018EST0926



Auctioneer/Realtor®
RUDY W. KIKO
330-540-2416
rudykiko@kikocompany.com

800-533-5456 | kikoauctions.com

